

Breast Cancer

CHI Formulary Treatment algorithm

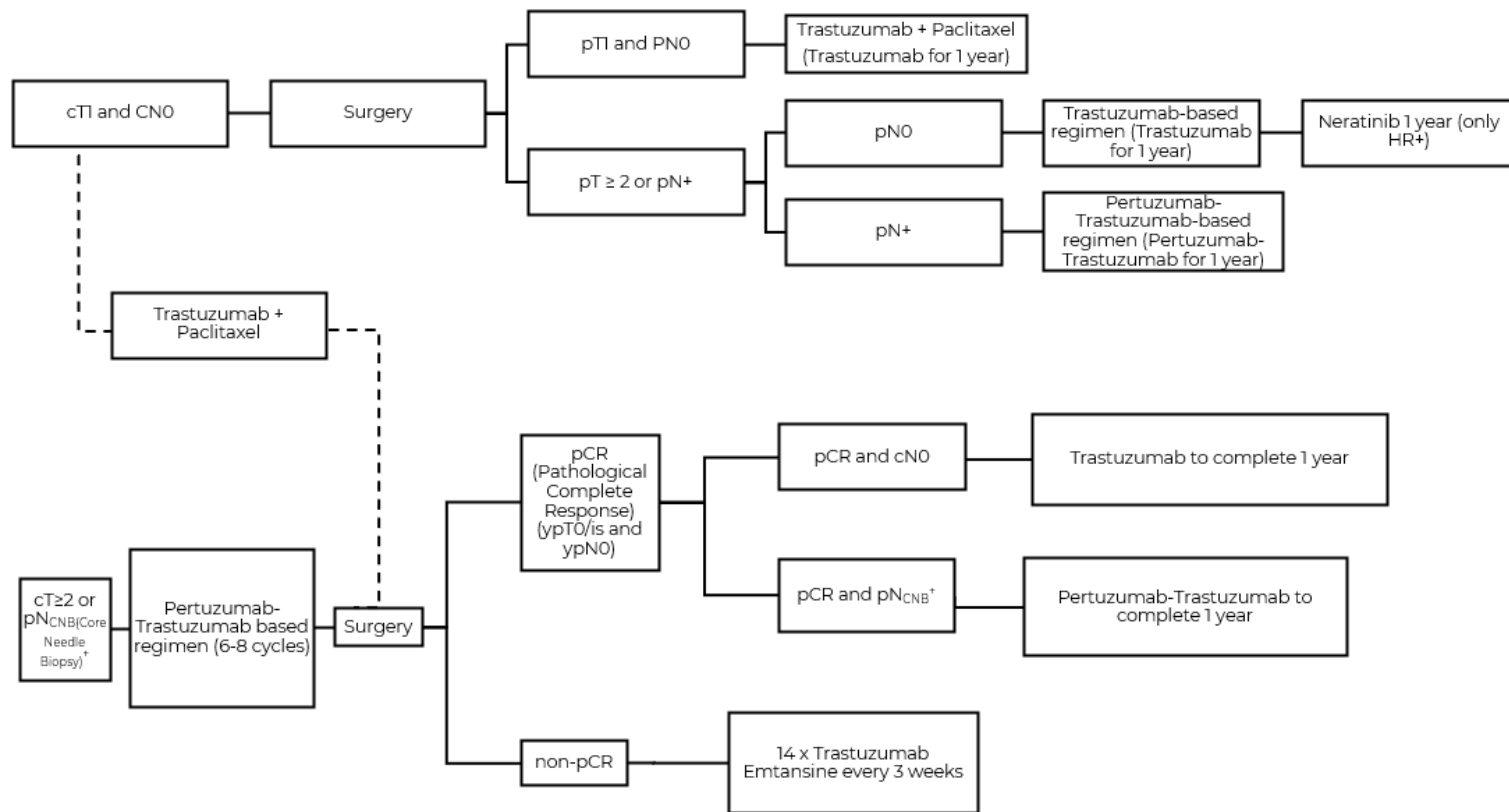
Treatment algorithm- June 2023

Supporting treatment algorithms
for the clinical management of
Breast Cancer

Figures 1 to 8 outline a comprehensive treatment algorithm on **the Breast Cancer** aimed at addressing the different lines of treatment after thorough review of medical and economic evidence by CHI committees.

For further evidence, please refer to CHI **Breast Cancer** full report. You can stay updated on the upcoming changes to our formulary by visiting our website at <https://chi.gov.sa/AboutCCHI/CCHIprograms/Pages/IDF.aspx>

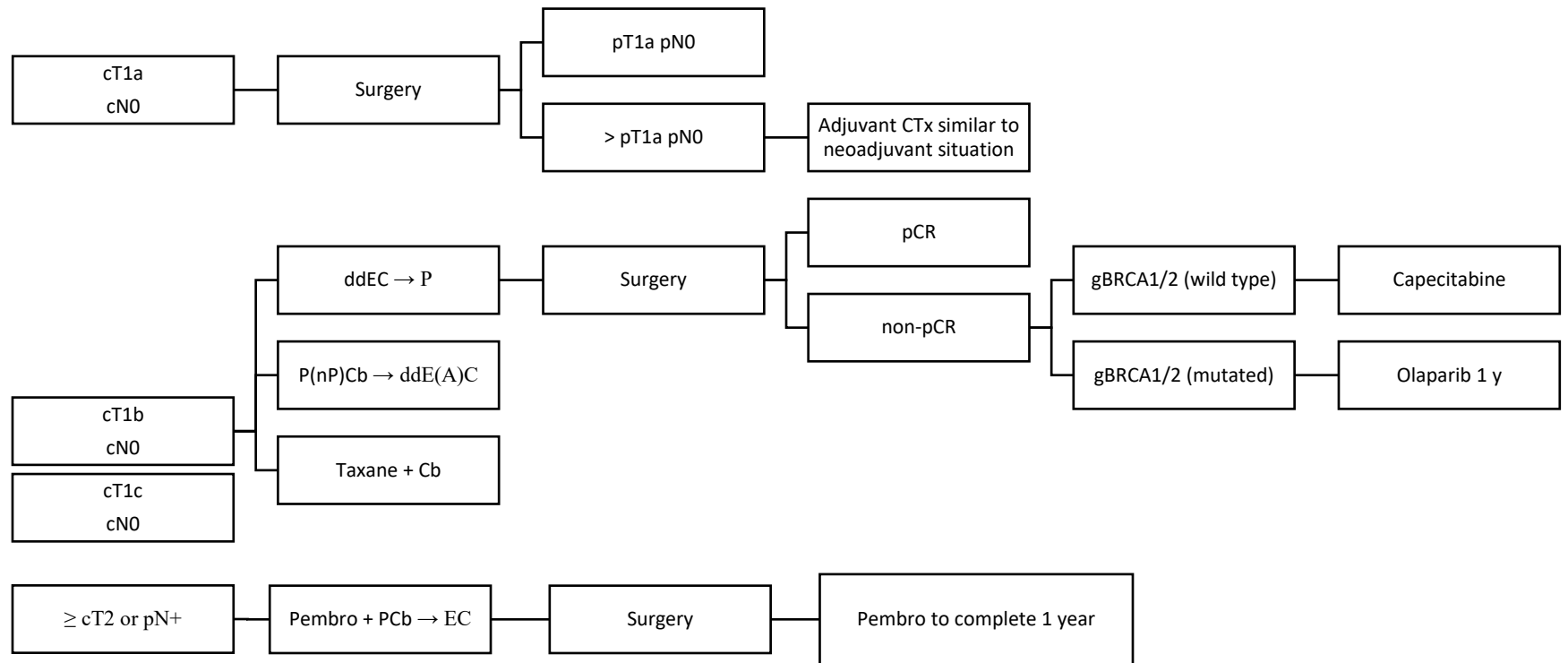
Our treatment algorithm offers a robust framework for enhancing patient care and optimizing treatment outcomes across a range of treatment options, holding great promise for improving healthcare delivery.



1

Figure 1: (Neo)adjuvant therapy of HER2-positive Breast Cancer

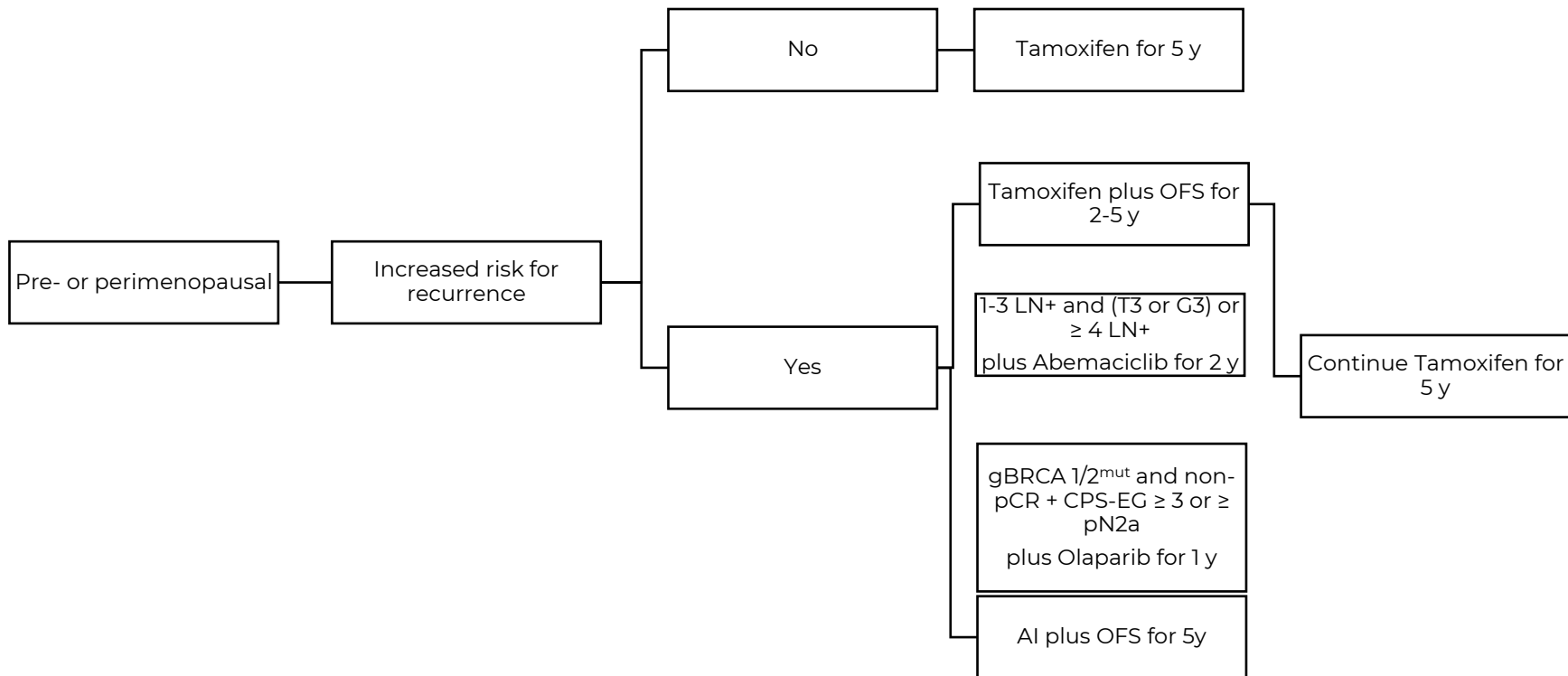
• ¹ Diagnosis and Treatment of Patients with Early and Advanced Breast Cancer Therapy Algorithms. www.ago-online.de



2

Figure 2: (Neo)adjuvant therapy of triple negative Breast Cancer

• ² Diagnosis and Treatment of Patients with Early and Advanced Breast Cancer Therapy Algorithms. www.ago-online.de



3

Figure 3: Adjuvant endocrine-based therapy in premenopausal patients

• ³ Diagnosis and Treatment of Patients with Early and Advanced Breast Cancer Therapy Algorithms. www.ago-online.de

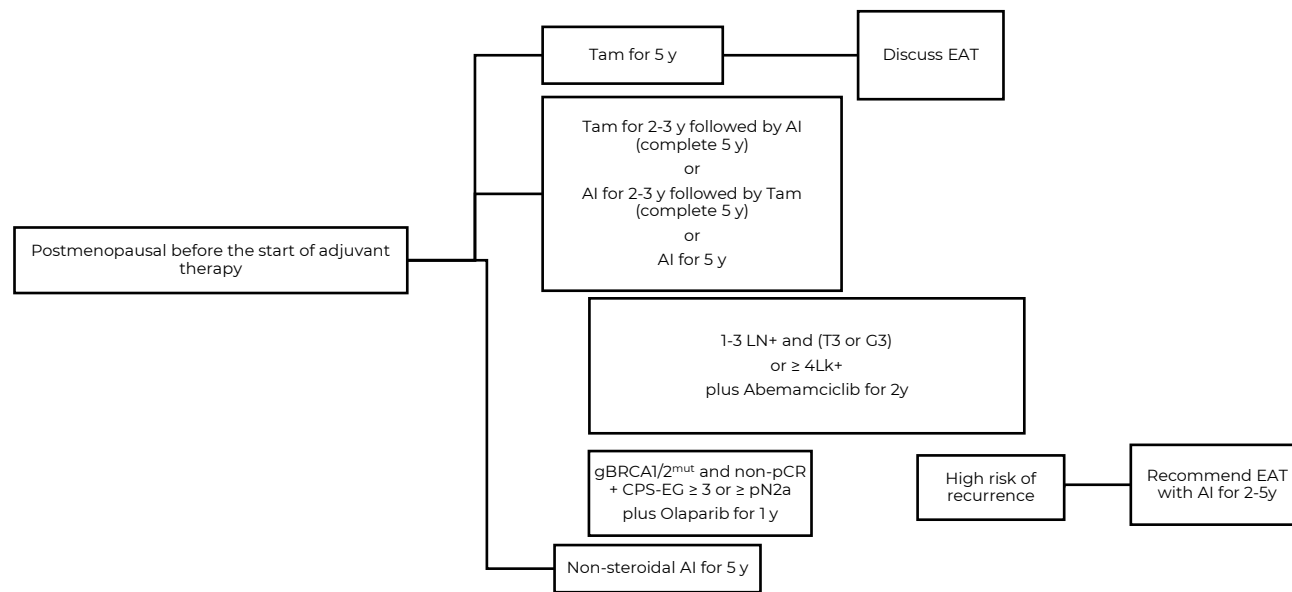
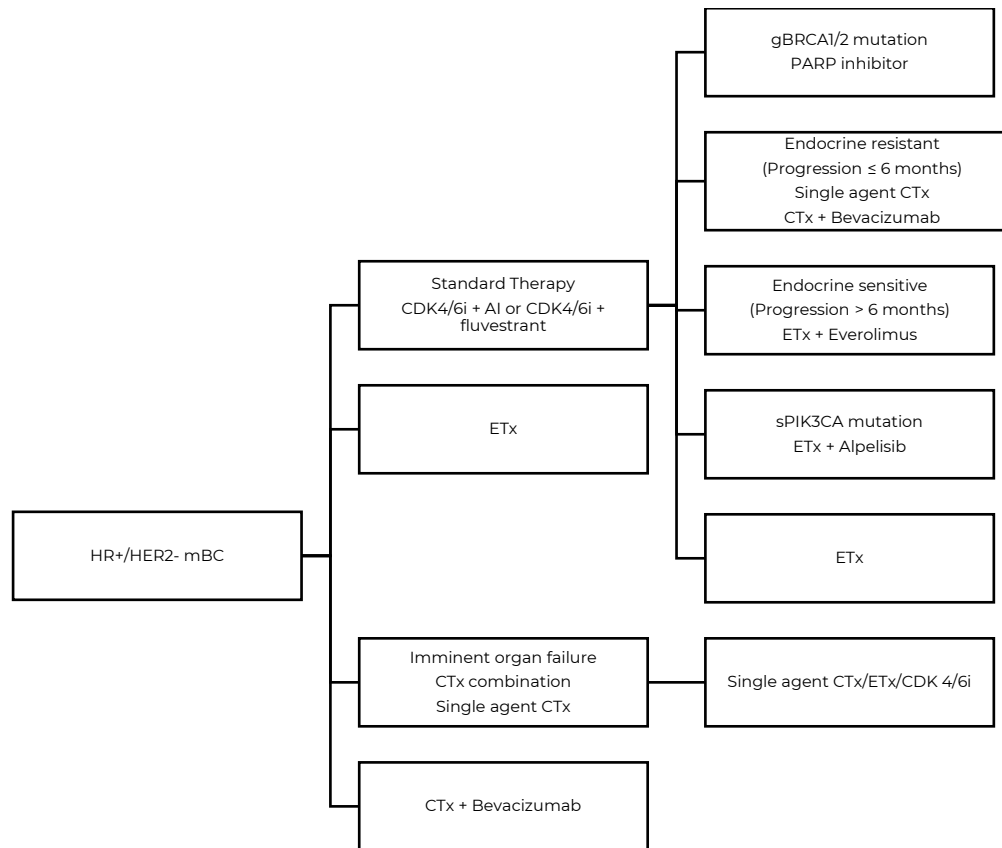


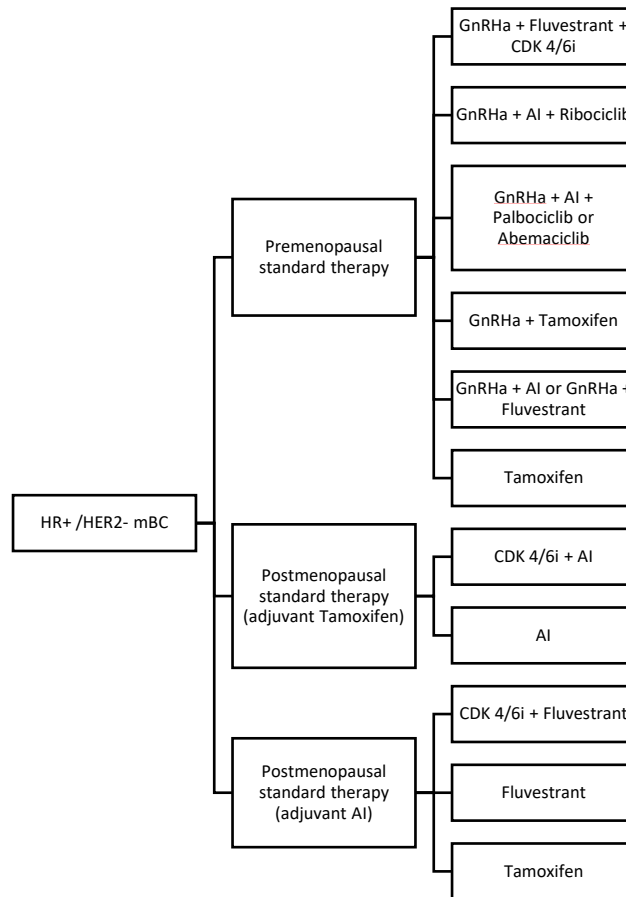
Figure 4: Adjuvant Endocrine-based therapy in postmenopausal patients



5

Figure 5: HR-positive/HER2-negative Metastatic Breast Cancer Strategies

• ⁵ Diagnosis and Treatment of Patients with Early and Advanced Breast Cancer Therapy Algorithms. www.ago-online.de



6

Figure 6: HR-positive/HER2-negative metastatic breast cancer: endocrine-based first line treatment

• ⁶ Diagnosis and Treatment of Patients with Early and Advanced Breast Cancer Therapy Algorithms. www.ago-online.de

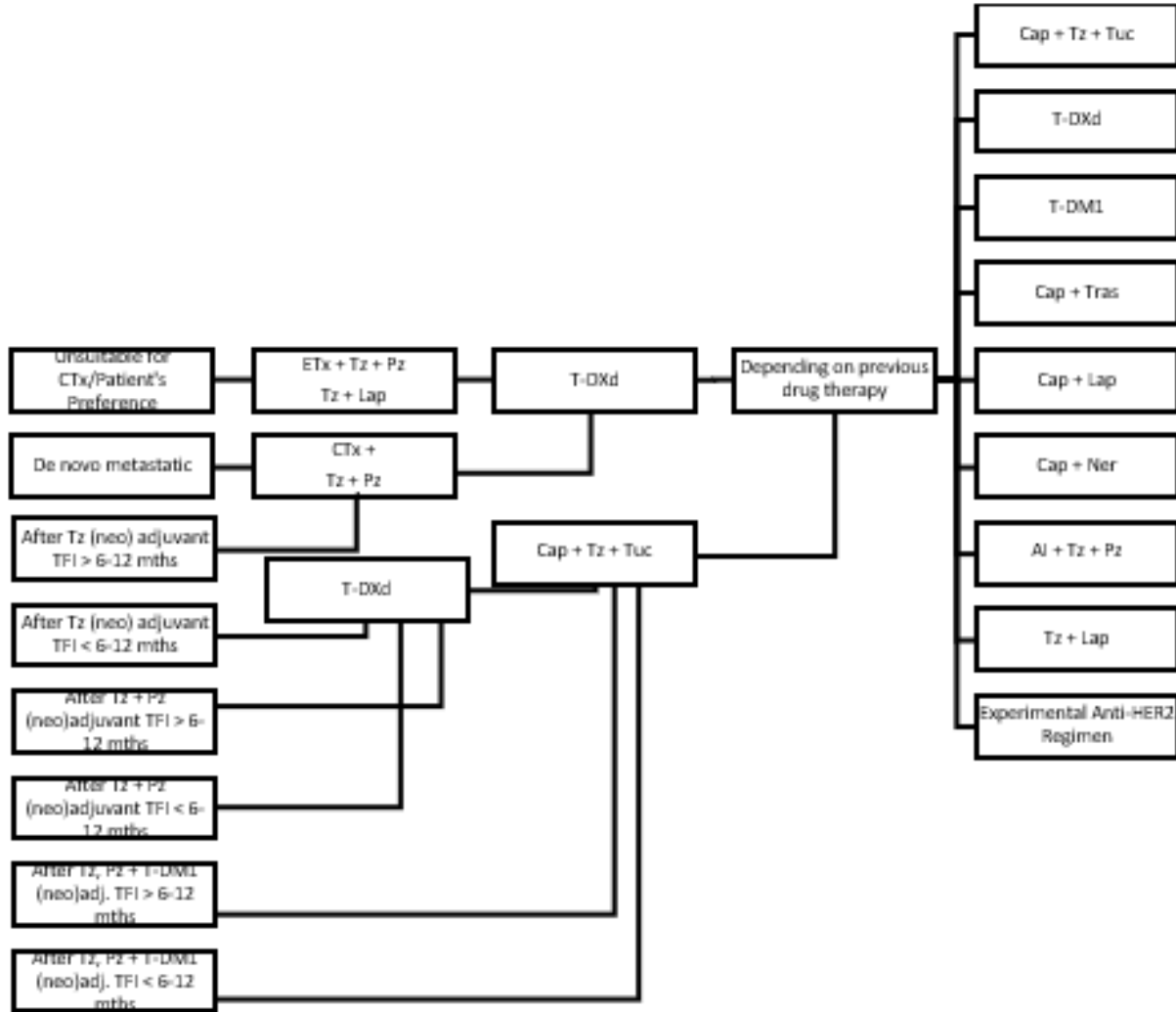


Figure 7: HER2-positive metastatic breast cancer: 1rst-3rd line:⁷

⁷ Diagnosis and Treatment of Patients with Early and Advanced Breast Cancer Therapy Algorithms. www.ago-online.de

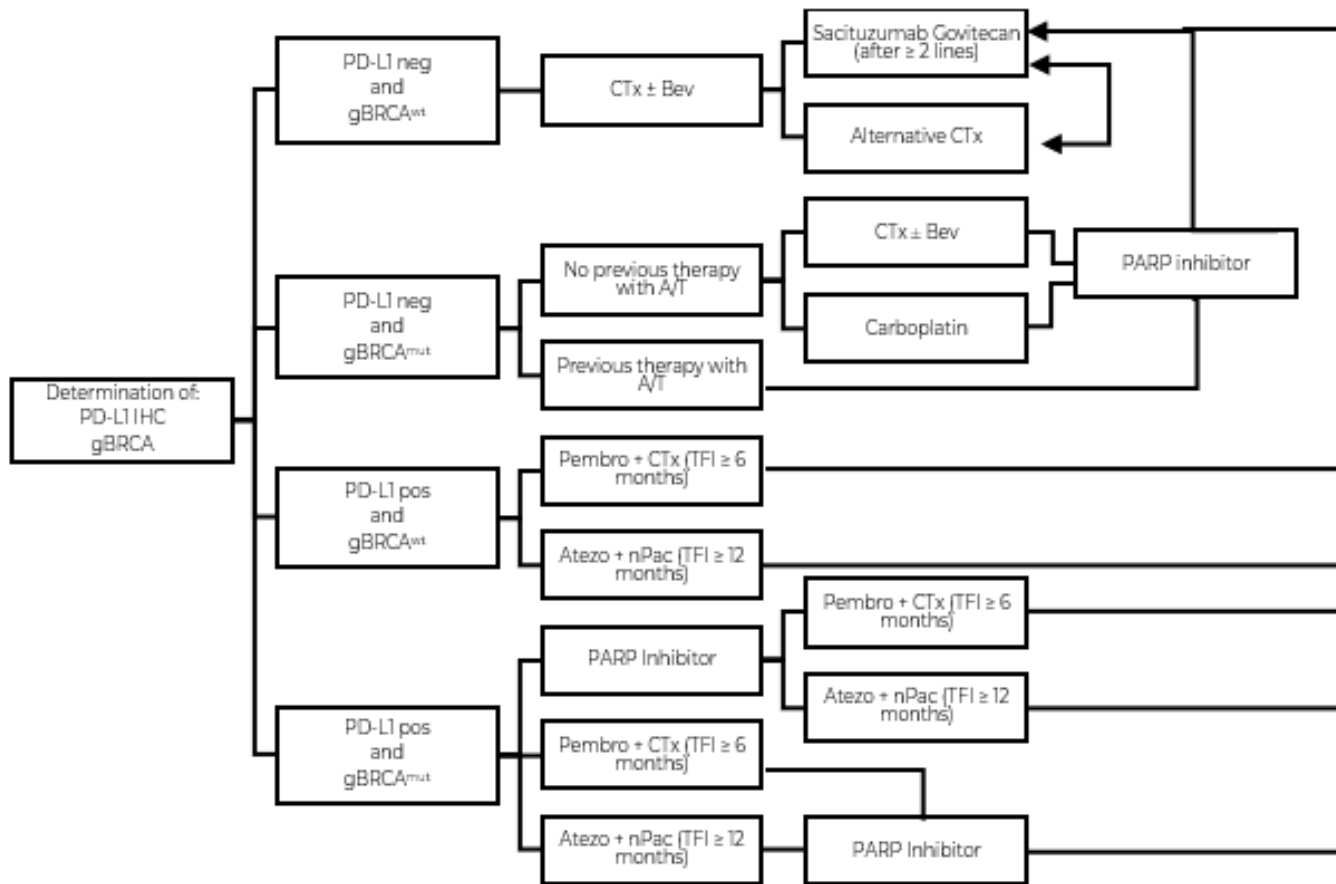


Figure 8: Triple-negative metastatic breast cancer

• ⁸ Diagnosis and Treatment of Patients with Early and Advanced Breast Cancer Therapy Algorithms. www.ago-online.de